

The Queens Leeds

More than just another conference venue



QHOTELS

A warm welcome
to Leeds' most famous landmark hotel,
steeped in history



The Queens hotel has stood proudly over City Square in Leeds since 1937 and has a unique place in the history of this famous city. Designed by architects W.Curtis Green and W.H.Hamlyn for the London, Midland and Scottish Railway;The Queens was built as the flagship, modern hotel for the recently redesigned Leeds Railway Station.

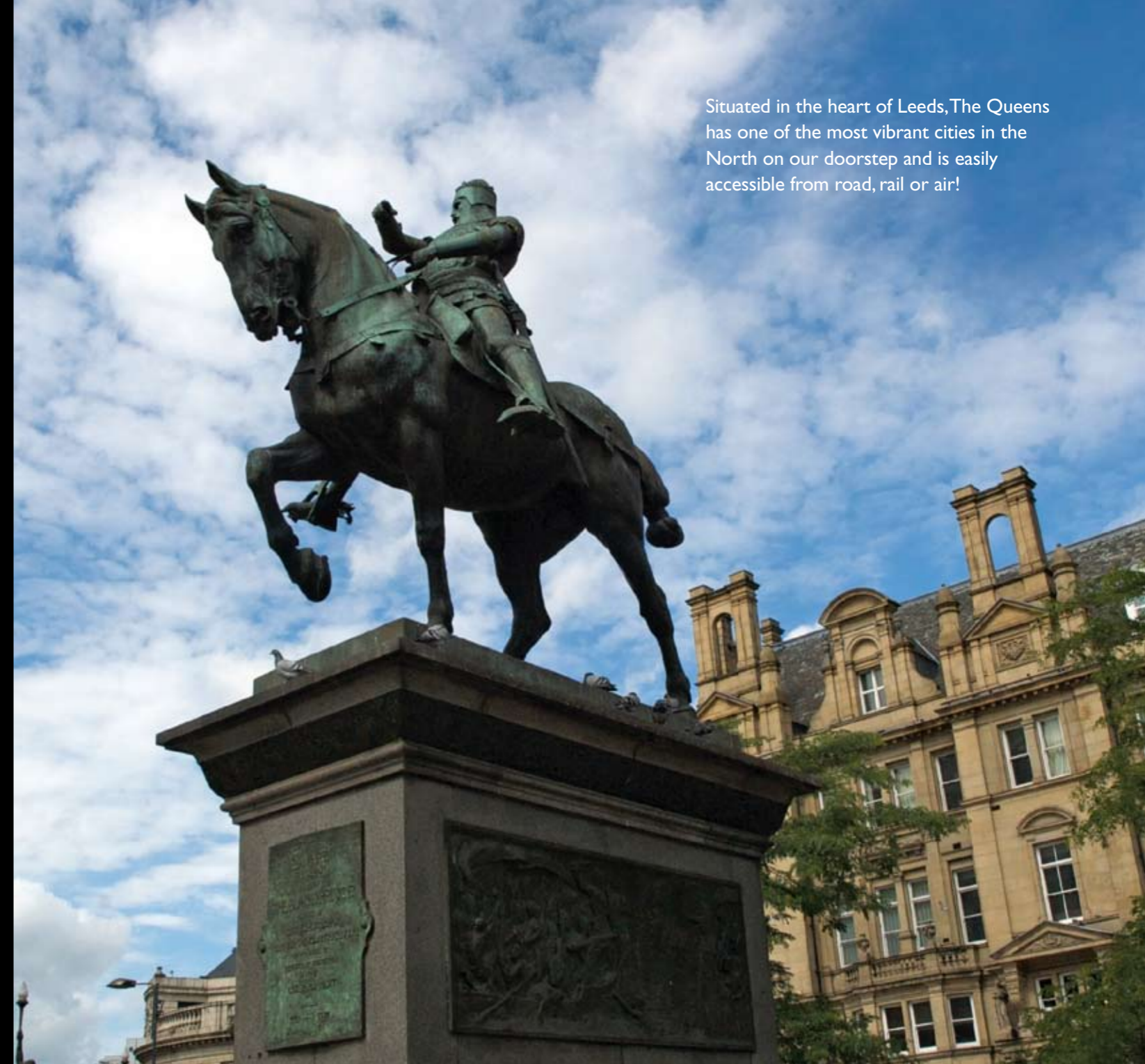
The Grade II listed building is clad in white Portland stone and oozes Art Deco style and charm and is the place to spot famous faces in Yorkshire's largest city.



One of the north's most vibrant cities

“Leeds is a vibrant, cosmopolitan city, unrivalled as a shopping destination and as a centre for entertainment. . . a great venue for all your conference needs.”

Leeds City Council



Situated in the heart of Leeds, The Queens has one of the most vibrant cities in the North on our doorstep and is easily accessible from road, rail or air!

Why Leeds?

- In the centre of the UK – halfway between Edinburgh and London
- One of the fastest growing cities in the UK - with a great reputation for sporting events, fantastic shopping, arts and culture
- Over 30 direct rail services from London daily with the train taking just 2 hours
- Easy, convenient access from M1, M62 and A1
- 12 miles from Leeds Bradford Airport with daily connections to London Heathrow
- Less than 1hr from Manchester Airport
- Surrounded by beautiful countryside - The Pennines, Yorkshire Moors and Peak District all on our doorstep



The unique destination in the city

The Queens is one of the most prestigious and state-of-the-art conference hotels in Yorkshire, with an enviable reputation for banqueting events and large conferences. Our city centre location, with 16 exceptional meeting rooms and space for up to 500 delegates makes us the ideal venue for that all-important product launch, motivational training day, annual conference or executive board meeting.

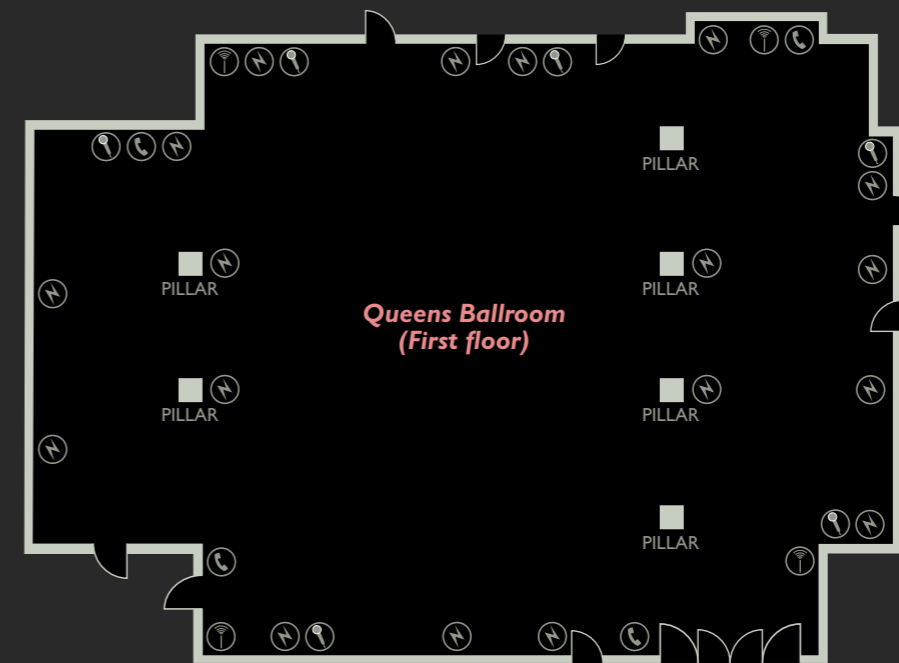
If you're looking for space, The Queens is unrivalled with 1,404 square metres of dedicated event facilities with the capability to offer up to 90 Mbps of dedicated internet bandwidth for your event. We also have plenty of public areas available for you once your event has finished for the day.

The Queens Ballroom, our largest suite, definitely has the wow factor. With high ceilings and an ornate balcony, the Ballroom is ideal for those important occasions that require back projection or large stage sets.



"Just a note to say a big thank you for all your hard work, help and support before and on site at my conference – it was really successful you were so accommodating throughout. I look forward to bringing another of our conferences or events to your hotel very soon"

Georgina Jenkins, Event Manager - Actuarial Profession



**Queens Ballroom
(First floor)**

Capacities

Theatre	600
Theatre (Back Projection)	600
Classroom	200
Classroom (Back Projection)	170
Boardroom	80
U-Shape	80
Cabaret	280*
Banquet	500
Dinner Dance	450

Dimensions (m)

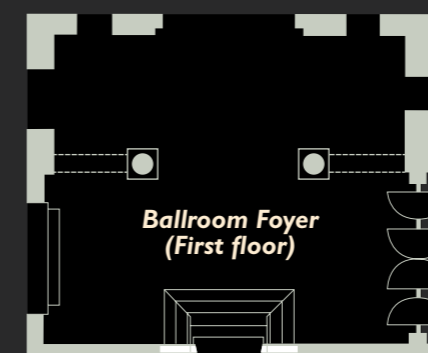
Room Size	26 x 19
Total Floor Area	494
Widest Opening	2.4 x 1.6
Maximum Ceiling Height	5
Minimum Ceiling Height	5
Ceiling Load Bearing	500kg

Lighting

- Controls in Room
- Tungsten
- Dimmers
- Blackout
- Low Voltage Halogen Spotlights
- Lutron Scene Setting Lighting

General

- Sound System
- 3 Phase
- Microphone Points
- Air Conditioning



**Ballroom Foyer
(First floor)**

Dimensions (m)

Room size	7.1 x 6.2
-----------	-----------



**Ark Royal
(First floor)**

Capacities

Theatre	100
Theatre (Back Projection)	80
Classroom	40
Classroom (Back Projection)	30
Boardroom	35
U-Shape	30
Cabaret	56*
Banquet	70
Dinner Dance	60

Lighting

- Tungsten
- Dimmers
- Blackout

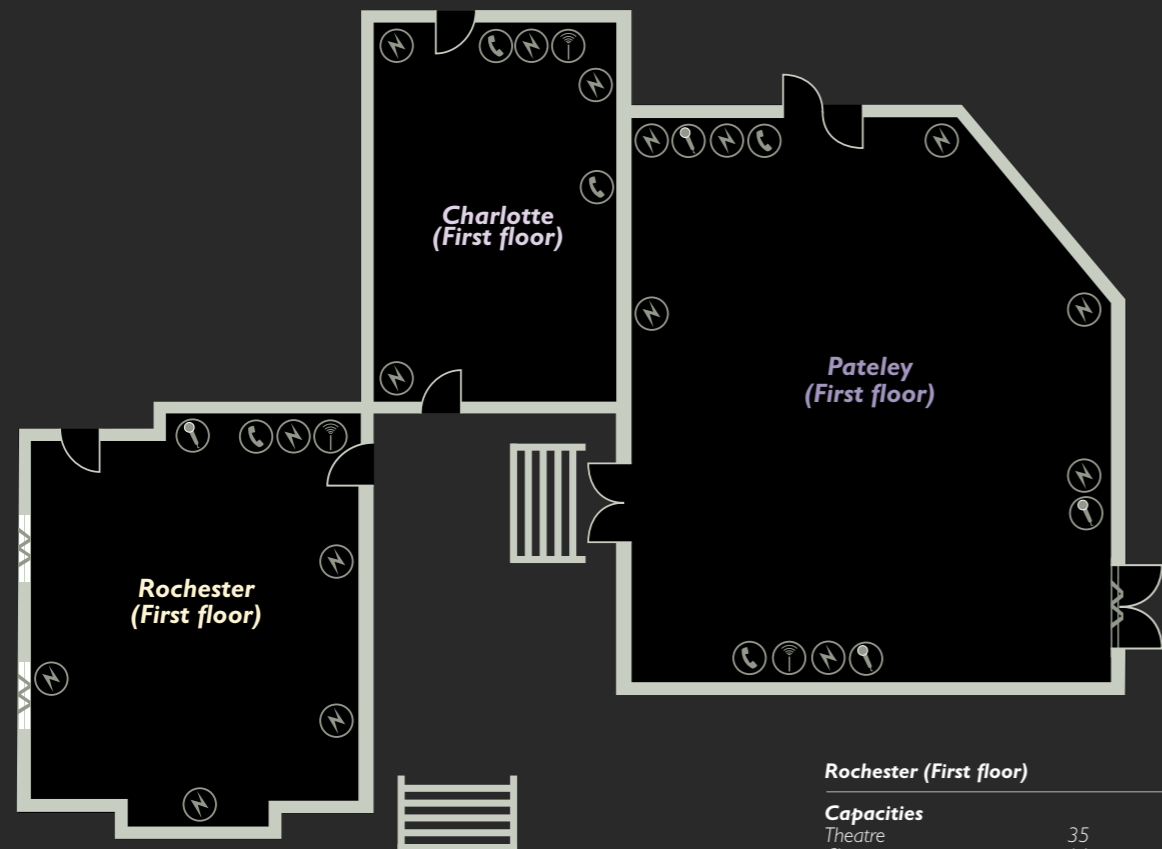
General

- 3 Phase
- Microphone Points
- Air Conditioning

Dimensions (m)

Room Size	14 x 9
Total Floor Area	126
Widest Opening	2.4 x 1.6
Maximum Ceiling Height	5
Minimum Ceiling Height	5

* Cabaret Style based on 8 delegates



Rochester (First floor)

Capacities	
Theatre	35
Classroom	16
Boardroom	20
U-Shape	14
Cabaret	24*
Banquet	30

Dimensions (m)	
Room Size	7 x 6
Total Floor Area	42
Widest Opening	2.0 x 0.9
Maximum Ceiling Height	3
Minimum Ceiling Height	3

Lighting	
Tungsten	
Dimmers	
Blackout	
Natural Daylight	

General	
Microphone Points	
Air Conditioning	

Charlotte (First floor)

Capacities	
Theatre	20
Classroom	10
Boardroom	16
U-Shape	10
Cabaret	8*

Dimensions (m)	
Room Size	7 x 4
Total Floor Area	28
Widest Opening	2.0 x 0.9
Maximum Ceiling Height	3
Minimum Ceiling Height	3

Lighting	
Tungsten	
Dimmers	
Blackout	

General	
Air Conditioning	

Pateley (First floor)

Capacities	
Theatre	80
Classroom	40
Boardroom	35
U-Shape	30
Cabaret	48*
Banquet	70
Dinner Dance	48

Dimensions (m)	
Room Size	11 x 9
Total Floor Area	101
Widest Opening	2.0 x 1.7
Maximum Ceiling Height	3
Minimum Ceiling Height	3

Lighting	
Tungsten	
Dimmers	
Blackout	
Natural Daylight	

General	
Microphone Points	
Air Conditioning	

Airedale (First floor)

Capacities	
Theatre	20
Classroom	10
Boardroom	14
U-Shape	10
Cabaret	8*

Dimensions (m)	
Room Size	5 x 4
Total Floor Area	20
Widest Opening	2.0 x 0.8
Maximum Ceiling Height	3
Minimum Ceiling Height	3

Lighting	
Tungsten	
Dimmers	
Blackout	
Natural Daylight	

General	
Microphone Points	
Air Conditioning	

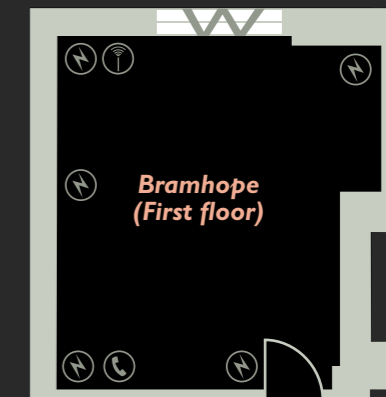


Capacities	
Theatre	10
Boardroom	8

Dimensions (m)	
Room Size	26 x 19
Total Floor Area	494
Widest Opening	2.4 x 1.6
Maximum Ceiling Height	5
Minimum Ceiling Height	5
Ceiling Load Bearing	500kg

Lighting	
Tungsten	
Dimmers	
Blackout	
Natural Daylight	

General	
Microphone Points	
Air Conditioning	

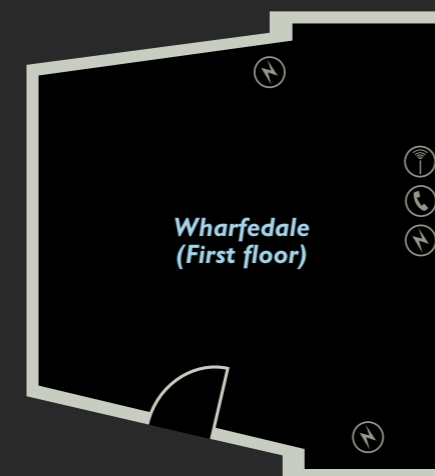


Capacities	
Boardroom	8

Dimensions (m)	
Room Size	4 x 4
Total Floor Area	16
Widest Opening	2.0 x 0.8
Maximum Ceiling Height	3
Minimum Ceiling Height	3

Lighting	
Tungsten	
Dimmers	
Blackout	

General	
Air Conditioning	



Capacities	
Boardroom	10

Dimensions (m)	
Room Size	4 x 4
Total Floor Area	16
Widest Opening	2.0 x 0.8
Maximum Ceiling Height	3
Minimum Ceiling Height	3

Lighting	
Tungsten	
Dimmers	
Blackout	

General	
Air Conditioning	

* Cabaret Style based on 8 delegates



Palm Court (Ground floor)

Capacities	
Theatre	200
Theatre (Back Projection)	150
Classroom	80
Classroom (Back Projection)	50
Boardroom	55
U-Shape	45
Cabaret	96*
Banquet	180
Dinner Dance	150

Dimensions (m)	
Room Size	19 x 4
Total Floor Area	266
Maximum Ceiling Height	4
Minimum Ceiling Height	3

Lighting	
Controls in Room	
Tungsten	
Dimmers	
Blackout	
Cold Cathode Tubing	
Low Voltage Halogen Spotlights	
Lutron Scene Setting Lighting	

General	
Microphone Points	
Air Conditioning	



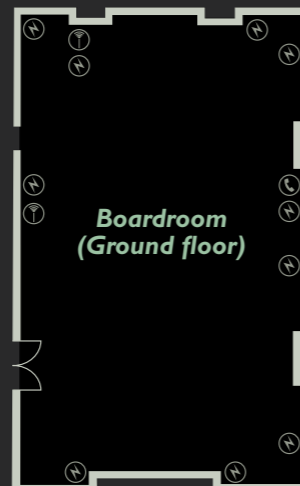
Headingley (Ground floor)

Capacities	
Theatre	35
Classroom	16
Boardroom	20
U-Shape	14
Cabaret	24*
Banquet	30

Dimensions (m)	
Room Size	6.5 x 6.5
Total Floor Area	42
Maximum Ceiling Height	3
Minimum Ceiling Height	3

Lighting	
Tungsten	
Dimmers	
Blackout	

General	
Air Conditioning	



Boardroom (Ground floor)

Capacities	
Boardroom	14
Banquet	14

Dimensions (m)	
Room Size	7 x 6
Total Floor Area	42
Maximum Ceiling Height	3
Minimum Ceiling Height	3

Lighting	
Tungsten	
Dimmers	
Blackout	

General	
Air Conditioning	



The Lobby (Ground floor)

Dimensions (m)	
Room Size	11 x 8
Total Floor Area	42
Maximum Ceiling Height	3
Minimum Ceiling Height	3



Linton (Ground floor)

Capacities	
Theatre	24
Classroom	8
Boardroom	14

Dimensions (m)	
Room Size	4.25 x 8.3
Total Floor Area	35
Maximum Ceiling Height	3
Minimum Ceiling Height	3

Lighting	
Tungsten	
Dimmers	
Blackout	
Natural Daylight	

General	
Microphone Points	
Air Conditioning	

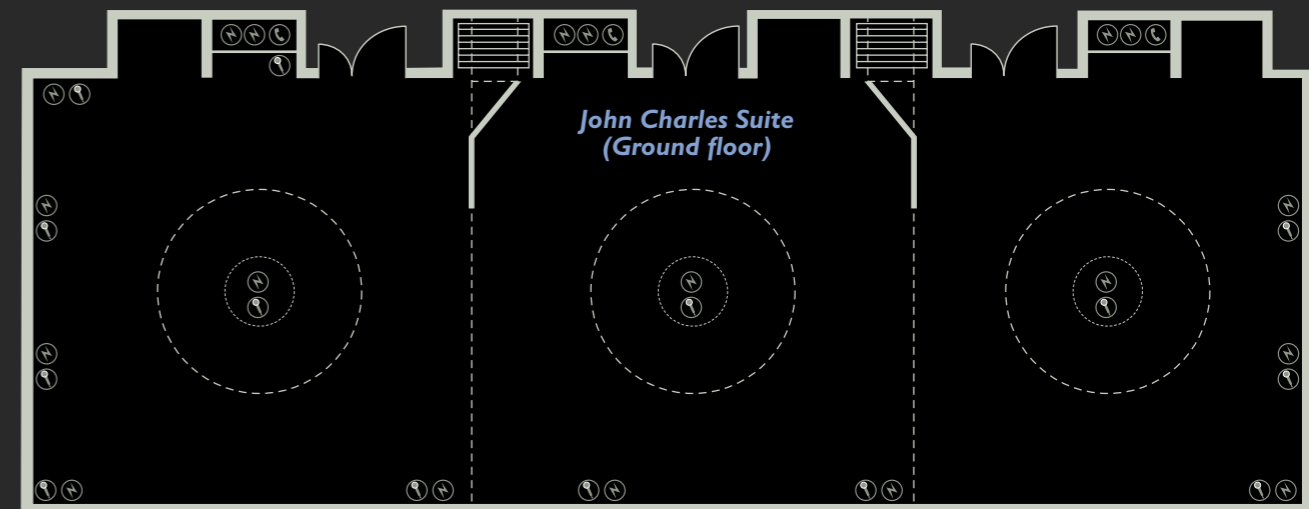
* Cabaret Style based on 8 delegates

John Charles 1		John Charles 2		John Charles 3	
Capacities		Capacities		Capacities	
Theatre	30	Theatre	40	Theatre	40
Classroom	20	Classroom	20	Classroom	20
Boardroom	20	Boardroom	22	Boardroom	22
U-Shape	20	U-Shape	22	U-Shape	22
Cabaret	24*	Cabaret	24*	Cabaret	24*

Dimensions (m)		Dimensions (m)		Dimensions (m)	
Room Size	21.98 x 7.35	Room Size	7.61 x 7.35	Room Size	7.61 x 7.35
Total Floor Area	161	Total Floor Area	55	Total Floor Area	56
Maximum Ceiling Height	3	Maximum Ceiling Height	3	Maximum Ceiling Height	3
Minimum Ceiling Height	3	Minimum Ceiling Height	3	Minimum Ceiling Height	3

Lighting		Lighting		Lighting	
Tungsten		Tungsten		Tungsten	
Low Energy Lighting		Low Energy Lighting		Low Energy Lighting	
Dimmers		Dimmers		Dimmers	
Blackout		Blackout		Blackout	
Natural Daylight		Natural Daylight		Natural Daylight	

General		General		General	
Microphone Points		Microphone Points		Microphone Points	
Air Conditioning		Air Conditioning		Air Conditioning	



John Charles Suite (Ground floor)

John Charles Suite		John Charles 2&3		John Charles 1&2	
Capacities		Capacities		Capacities	
Theatre	150	Theatre	80	Theatre	80
Theatre (Back Projection)	110	Classroom	35	Classroom	35
Classroom	80	Boardroom	35	Boardroom	35
Classroom (Back Projection)	72	U-Shape	35	U-Shape	35
Boardroom	64	Cabaret	56*	Cabaret	56*
U-Shape	61				
Cabaret	80*				
Banquet	120				
Dinner Dance	120				

Dimensions (m)		Dimensions (m)		Dimensions (m)	
Room Size	21.98 x 7.35	Room Size	15.24 x 7.35	Room Size	14.35 x 7.35
Total Floor Area	161	Total Floor Area	112	Total Floor Area	105
Maximum Ceiling Height	3	Maximum Ceiling Height	3	Maximum Ceiling Height	3
Minimum Ceiling Height	3	Minimum Ceiling Height	3	Minimum Ceiling Height	3

Lighting		Lighting		Lighting	
Tungsten		Tungsten		Tungsten	
Low Energy Lighting		Low Energy Lighting		Low Energy Lighting	
Dimmers		Dimmers		Dimmers	
Blackout		Blackout		Blackout	
Natural Daylight		Natural Daylight		Natural Daylight	

General		General		General	
Microphone Points		Microphone Points		Microphone Points	
Air Conditioning		Air Conditioning		Air Conditioning	

General		General		General	
Microphone Points		Microphone Points		Microphone Points	
Air Conditioning		Air Conditioning		Air Conditioning	

* Cabaret Style based on 8 delegates

Ground Floor



First Floor



Flexibility, service and satisfaction...

...those are the standards we hold ourselves to at The Queens and our dedicated team are passionate about creating an event just for you. With award-winning service and expertise from start to finish, we strive to ensure your event runs stress-free and without a glitch.

YOUR hotel during YOUR event

We've been organising, planning and executing fabulous events for more than 75 years and bring a huge amount of experience and know-how to the table.

Need a bespoke day delegate or 24 hour package? Want the entire hotel to yourself? No problem – our team bring suggestions, not limitations and whatever you need, we will do our very best to deliver.

Exceptional value for money

Great service, tailor-made packages and all the space you could ever need - it's not too good to be true; you really can have it all when you hold an event at The Queens. What's more, we offer fantastic value for money.





After a busy day, join your colleagues in The Queens Bar to catch up on the day's events, before tucking into a delicious meal in the relaxed surroundings of The Queens Grill and retiring to one of our 215 well-equipped bedrooms - perfect for a great night's sleep.

For the ultimate in exclusivity, why not treat yourself to a stay in our luxurious QClub – our dedicated executive floor? Situated at the very top of the hotel, the QClub comprises 18 plush and peaceful bedrooms as well as an exclusive executive lounge for QClub guests.

With free WiFi throughout the hotel and complimentary snacks in the exclusive QClub lounge, you'd be forgiven for not wanting to leave the comfort of the hotel; but for those wishing to venture into Leeds, The Queens is in the heart of the city and the perfect base for exploration!

Once your
event is over...



The Queens at a glance

- Fabulous central location in the heart of Leeds
- 16 conference and meeting rooms
- Our stunning Ballroom has space for up to 500 guests
- Adjacent to Leeds Railway Station
- On-site valet parking available
- 215 four-star bedrooms
- The QClub – Leeds' first dedicated executive top floor
- Free WiFi throughout the hotel
- Dedicated bandwidth available for your event



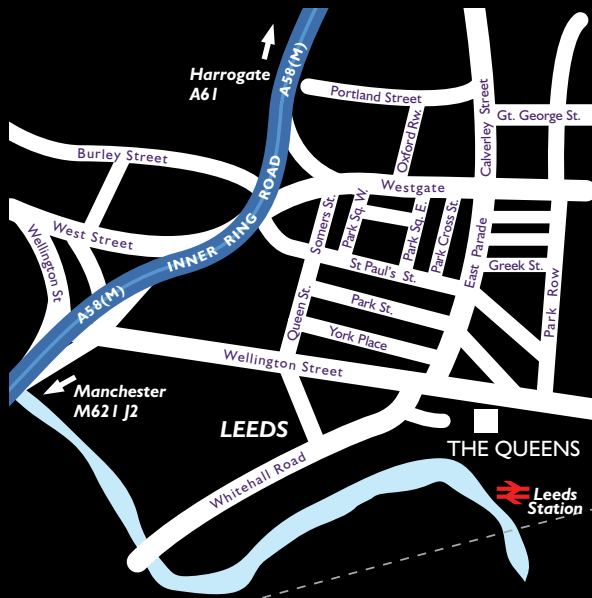
To find out more about holding your next event
at The Queens, contact our dedicated team now.

Call: 0113 243 1323

Email: queensevents@QHotels.co.uk

Enquire online: www.QConferences.co.uk

Getting to The Queens



THE QUEENS, CITY SQUARE, LEEDS LS1 1PJ

BY ROAD

From the South

From the M621, M1 and M62 motorways follow the signs to Leeds city centre and train station, along Neville Street towards City Square. Pass under the railway bridge and at the traffic lights, take a left into the slip road in front of the hotel.

From the North

Take any main A road into Leeds and then follow signs for the train station, which leads you round the city centre loop road. At the top of Neville Street, at the traffic lights, take a left into the slip road in front of The Queens. Chargeable valet parking is available for residential guests.

SAT NAV POSTCODE: LS1 4DY

DRIVE TIMES

York – 42 minutes
 Sheffield – 46 minutes
 Manchester – 49 minutes
 Nottingham – 1 hour 19 minutes
 Newcastle – 1 hour 48 minutes
 Birmingham – 2 hours
 London – 3 hours 23 minutes

BY AIR

Leeds Bradford International Airport - 12 miles
 Manchester Airport - 54 miles

BY RAIL

Leeds Railway Station - adjacent to hotel